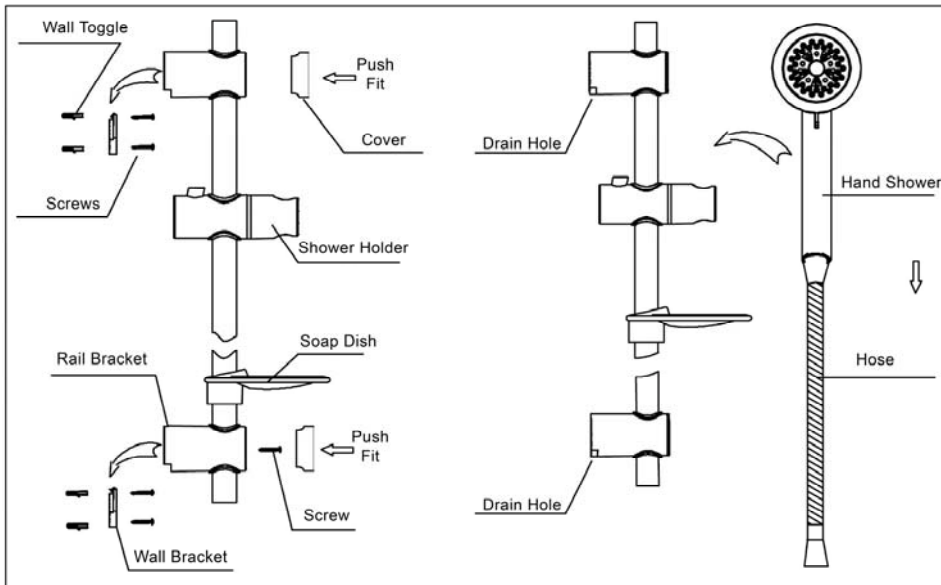


HSR01 EWING ECO SHOWER RAIL - INSTALLATION INSTRUCTIONS



Rail Components

- 1 x Rail
- 2 x Wall Brackets
- 5 x Screws
- 4 x Wall Toggles
- 2 x Rail Brackets
- 2 x Rail Bracket Covers
- 1 x Shower Holder
- 1 x Soap Dish

Kit Components

- 1 x Hand Shower
- 1 x Hose
- 1 x Wall Elbow

IMPORTANT NOTES

1. MAKE SURE THERE ARE NO WATER PIPES OR ELECTRICAL CABLES INSIDE THE WALL CAVITY WHERE YOU INTEND TO DRILL.
2. IF POSSIBLE DRILL IN THE GROUT AREAS BETWEEN CERAMIC TILES TO MINIMISE THE RISK OF TILES CRACKING.
3. THIS PRODUCT IS NOT DESIGNED TO ACT AS A GRAB RAIL.
4. THIS PRODUCT IS NOT DESIGNED TO HANDLE WEIGHT BEARING LOADS, i.e. NO SHOWER CADDIES AND PUMP ACTION BOTTLES ARE TO BE USED ON THE RAIL AND SOAP DISH ASSEMBLY.
5. NEVER USE ABRASIVE CLEANERS OR DETERGENTS ON THIS RAIL AS THEY WILL DAMAGE THE PLATING AND COMPONENT MATERIALS. ALWAYS USE A SOFT CLOTH WITH WARM WATER TO CLEAR AWAY ANY SOAP FROM THE RAIL COMPONENTS.

INSTALLATION PROCEDURE

1. Carefully inspect the Shower Rail components and ensure all components are present.
2. Reassemble the Shower Rail components to evaluate the correct alignment and position of the assembly. Be very careful not to scratch and damage any of the components.
3. Mark drill hole(s) through the Wall Bracket in the correct location in preparation for drilling holes.
- 3a. Determine the correct type of fixing required to secure the rail to the wall before you drill any holes. Installation environments vary so other fixing components (not included) may be required for the secure installation of the rail.
4. Drill holes to suit desired wall fixings and secure the Wall Bracket(s) to the wall, being careful not to over tighten the screws and crack the wall Bracket(s).
5. Secure the bottom Rail Bracket to the Rail by screwing through the hole in the Rail so the Rail Bracket and Rail are secured together. Do not over tighten the screw.
6. Align both Rail Brackets so they engage correctly with the Wall Brackets and click into place. (Align the bottom Bracket first).
7. Push on the Rail Bracket Covers.
8. To Adjust the Sliding Shower Holder press and hold the button and move to the desired location and then release the button.
9. Place the Hand Shower (with the hose attached) in the holder and gently tilt the Shower holder to the desired angle. DO NOT FORCE THE HOLDER TO MOVE.

WARRANTY

Ewing Industries will repair or replace a product where a fault is shown to be caused by faulty manufacture or materials. This warranty is subject to correct installation procedures and product use. Ewing Industries warranty does not include removal and installation costs. Our goods come with guarantees that cannot be excluded under the Australian Consumer Law. You are entitled to a replacement or refund for a major failure and for compensation for any other reasonably foreseeable loss or damage. You are also entitled to have the goods repaired or replaced if the goods fail to be of acceptable quality and the failure does not amount to a major failure.

For all warranty claims please contact

Ewing Industries

11 Bailey Court, PO Box 5446 Brendale QLD 4500

(07) 3205 6099 sales@ewingindustries.com.au www.ewingindustries.com.au



Product Manufactured in China